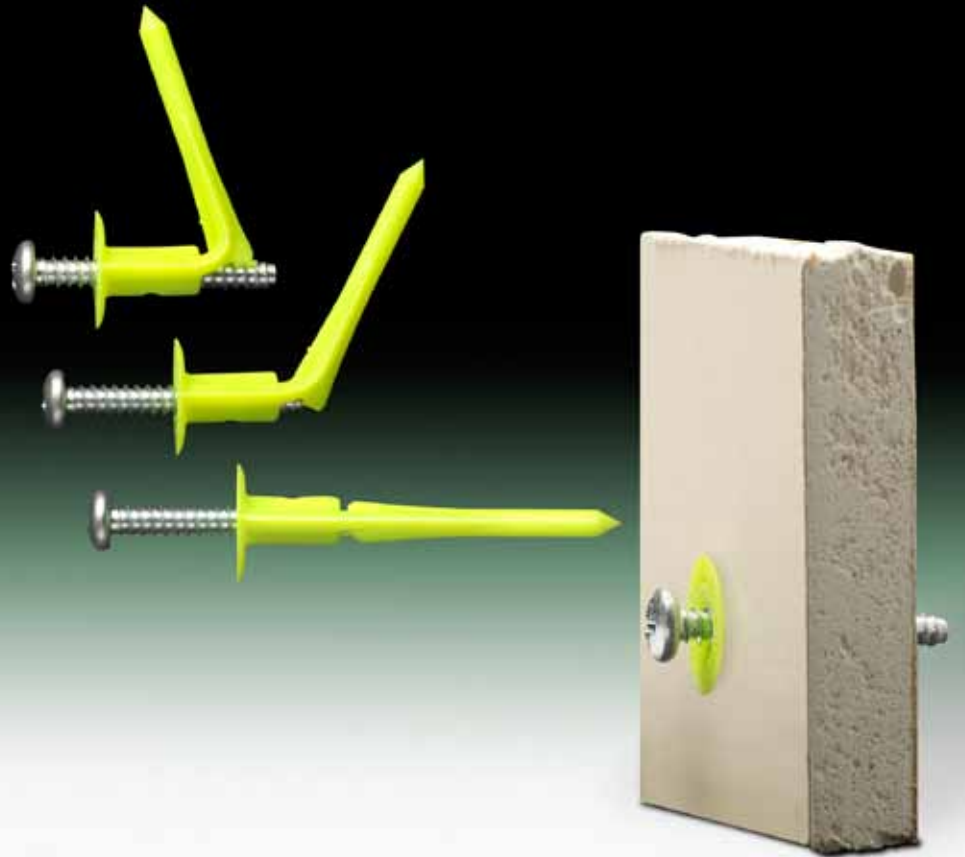
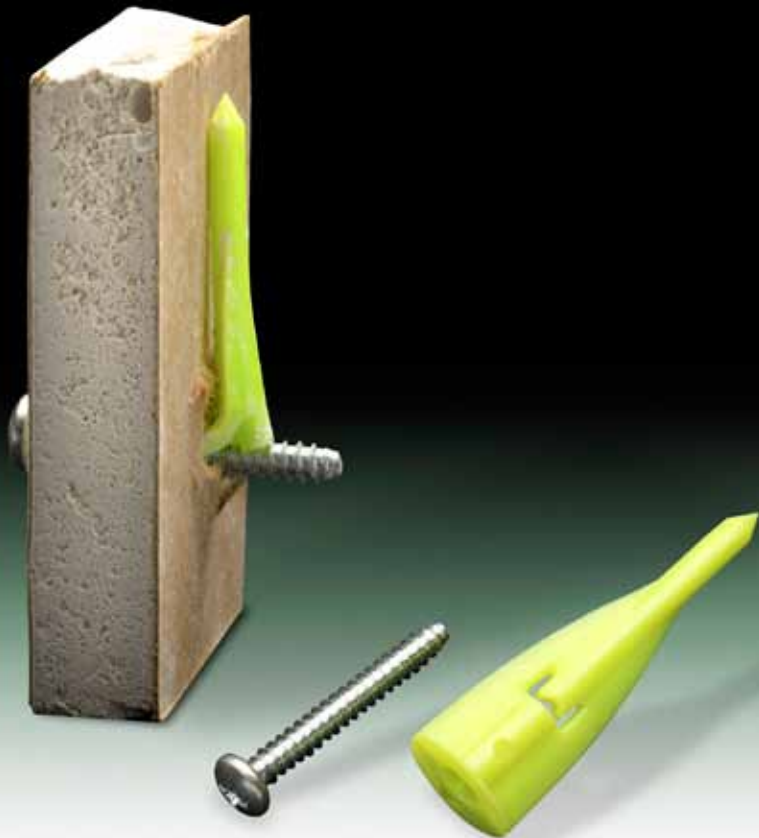
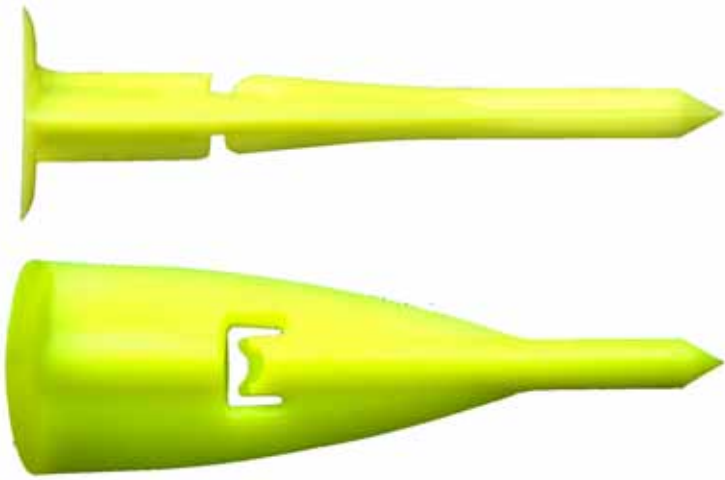




WallClaw
Anchors

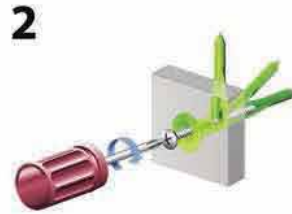




Hammer-In Drywall Anchors



HAMMER-IN



FASTEN



DONE



NO DRILLING



HEAVY LOADS



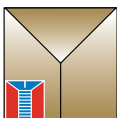
1/2" & 5/8" WALLS



EASY TO REMOVE



EASY TO REPAIR



Metallics ■ 229 Cross Street, Bristol, CT 06010
Tel 800-243-8272 ■ Fax 800-831-9358 ■ Email sales@metallics.us

Visit us online at:
www.metallics.us





KEY BENEFITS OF WALLCLAW ANCHORS

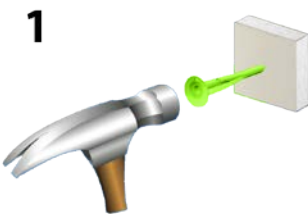
- | | |
|-----------------------------|--|
| 1. ONE ANCHOR | ONE WallClaw hangs everything - light loads up to heavy-duty loads of 125 lbs.
No need for light, medium and heavy duty anchors – just WallClaw Anchors. |
| 2. EASY TO INSTALL | Hammers in like a nail |
| 3. NO DRILLING | No drilling - no mess |
| 4. CLAMPS TO WALL | WallClaw Anchors flat head and nail tip combine to clamp to wall for positive hold |
| 5. HOLDS FIRM | Will not wiggle free from wall - like plugs or threaded screw-in anchors |
| 6. WORKS IN ANY WALL | Works in BOTH 1/2" and 5/8" wallboard - ONE anchor |
| 7. EASY TO REMOVE | Remove screw - Anchor slips out |
| 8. EASY TO PATCH | Removal leaves a small slit in the wall - not a gaping hole - easy to repair |
| 9. HEAVY DUTY LOADS | Hangs up to 90 lbs. (1/2" wall) and 125 lbs. (5/8" wall) with safety factors included |
| 10. DYNAMIC LOADING | WallClaw clamps to wall for better hold resisting pulling on towels and curtains |
-

CONSUMER DESIGNED

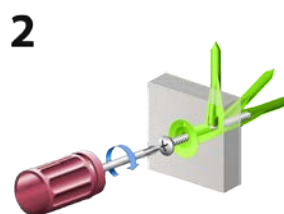
We interviewed over 300 consumers coming out of hardware stores and asked what they liked and did not like about existing anchors.

The result is our WallClaw - hammer-in wall anchors.

"Hammer-in" was the KEY design request.



HAMMER-IN



FASTEN



DONE